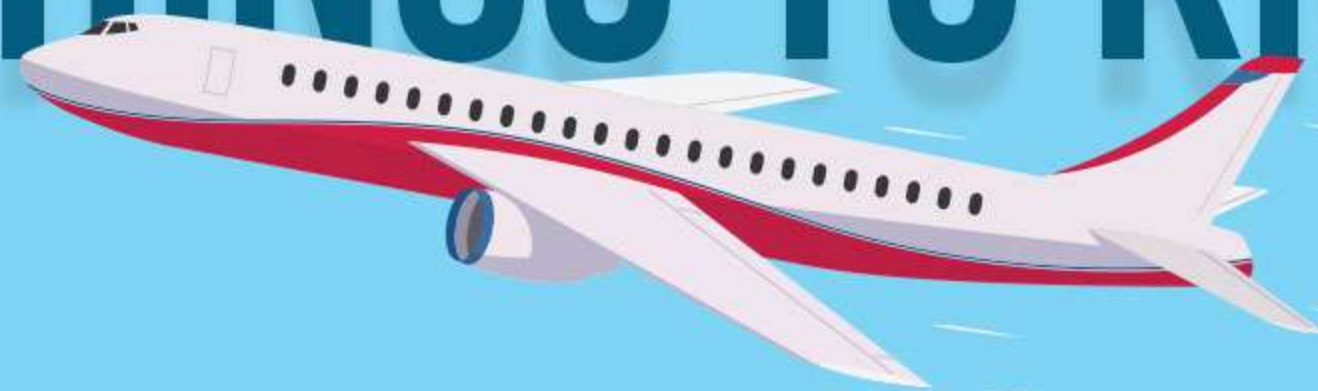




FLYING INTO NIGERIA?
7 THINGS TO KNOW



01

All passengers travelling INTO Nigeria must be tested for COVID-19 by PCR. The PCR test must be done within 72 – 96hrs before boarding/arriving in Nigeria.



A red play button icon with the number '02' inside it, indicating the second step in a process.

02

An illustration of a person's hands typing on a laptop keyboard. The laptop screen is blank and blue. The person is wearing a dark suit jacket and a white shirt cuff.

Before Boarding, all passengers are also required to register, book and pay for a Covid 19 PCR test to be done 7 days after arrival via the Nigeria International travel portal:

<https://nitp.ncdc.gov.ng>



03

A confirmation email will be sent to all intending passengers for their scheduled tests at the approved test centers once payment is confirmed



05

Post sample collection, passengers must continue to self-isolate until they receive the results. During the period of self isolation, they are to avoid physical interactions with friends, family, colleagues, and other members of the public (i.e. must observe strict physical and social distancing)



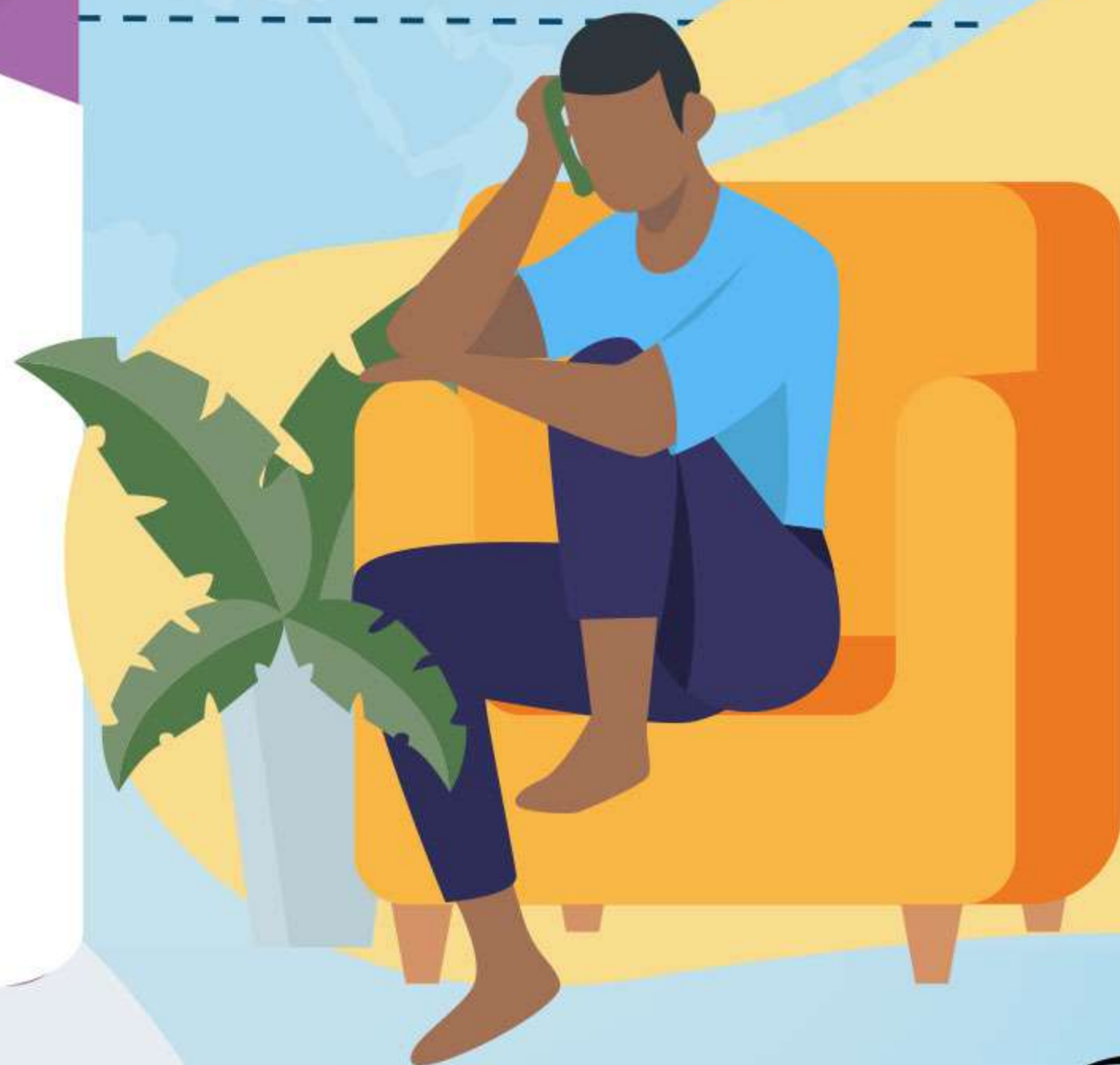
06

The test results should be ready within **24 – 48 hours** and the state Public Health Teams & Nigeria Center for Disease Control (NCDC) will be informed accordingly. On the third day after sample collection, Passengers should check the Lagos Biobank Portal <https://covid19.lagosstatebiobank.com> using their invoice numbers for results

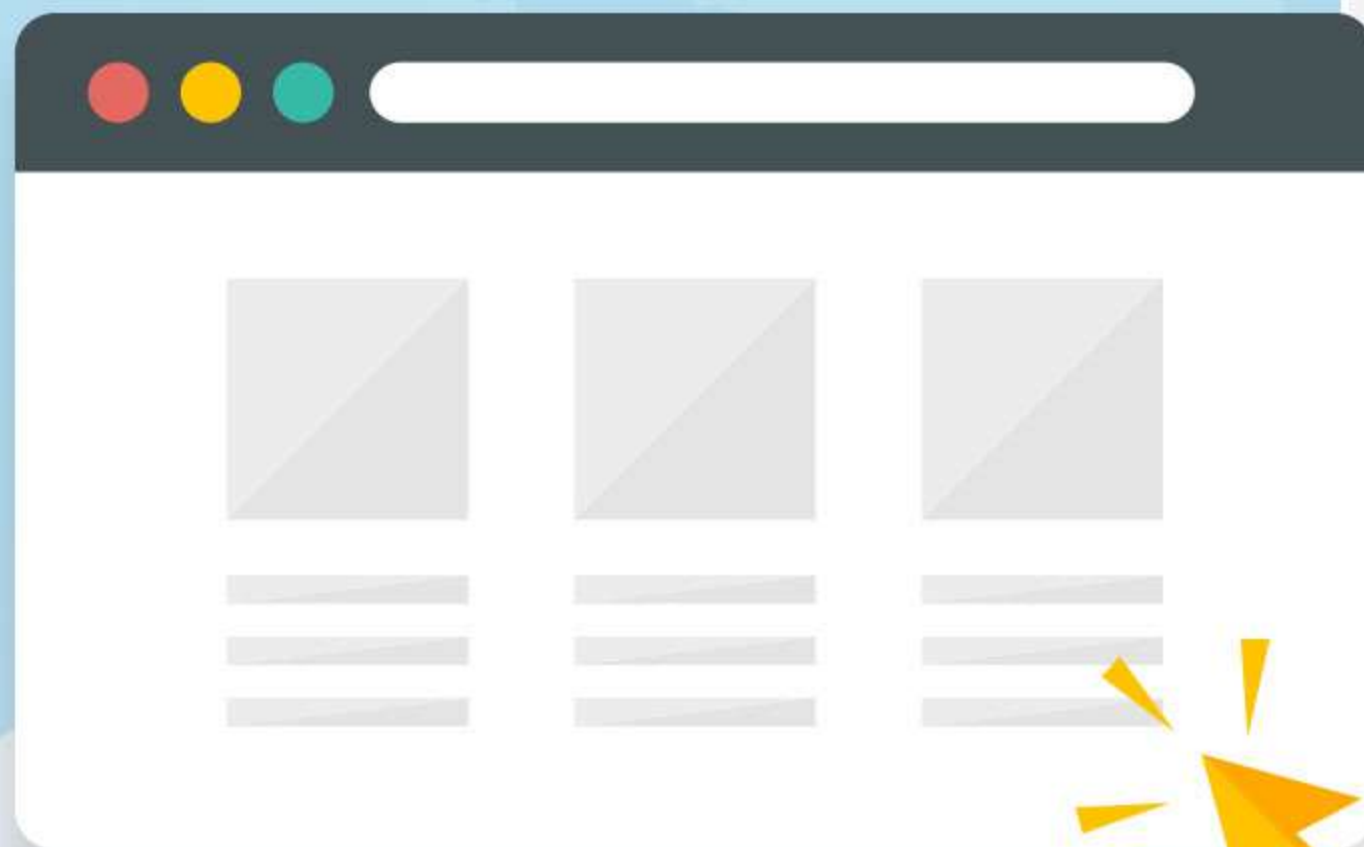


07

If negative, passengers can come out of isolation, but if positive, they should further isolate for another 7 days. If there are any symptoms during this period, please call **08000EKOMED** or **08000CORONA**.



08



Visit
<https://nitp.ncdc.gov.ng>
for more information.





PARTNERS





THANK YOU

